

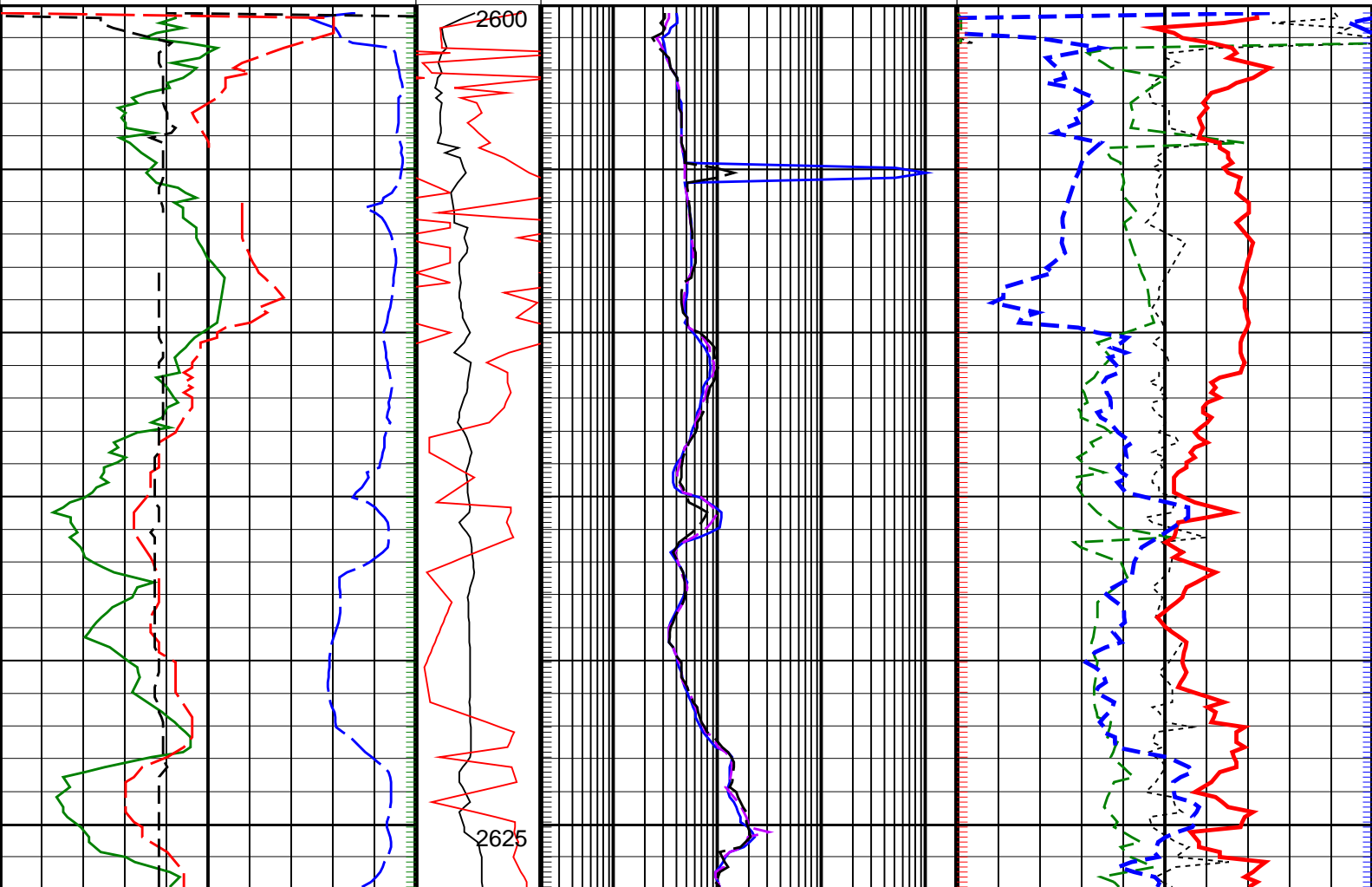
# Longtom-4 P LWD RT 200MD

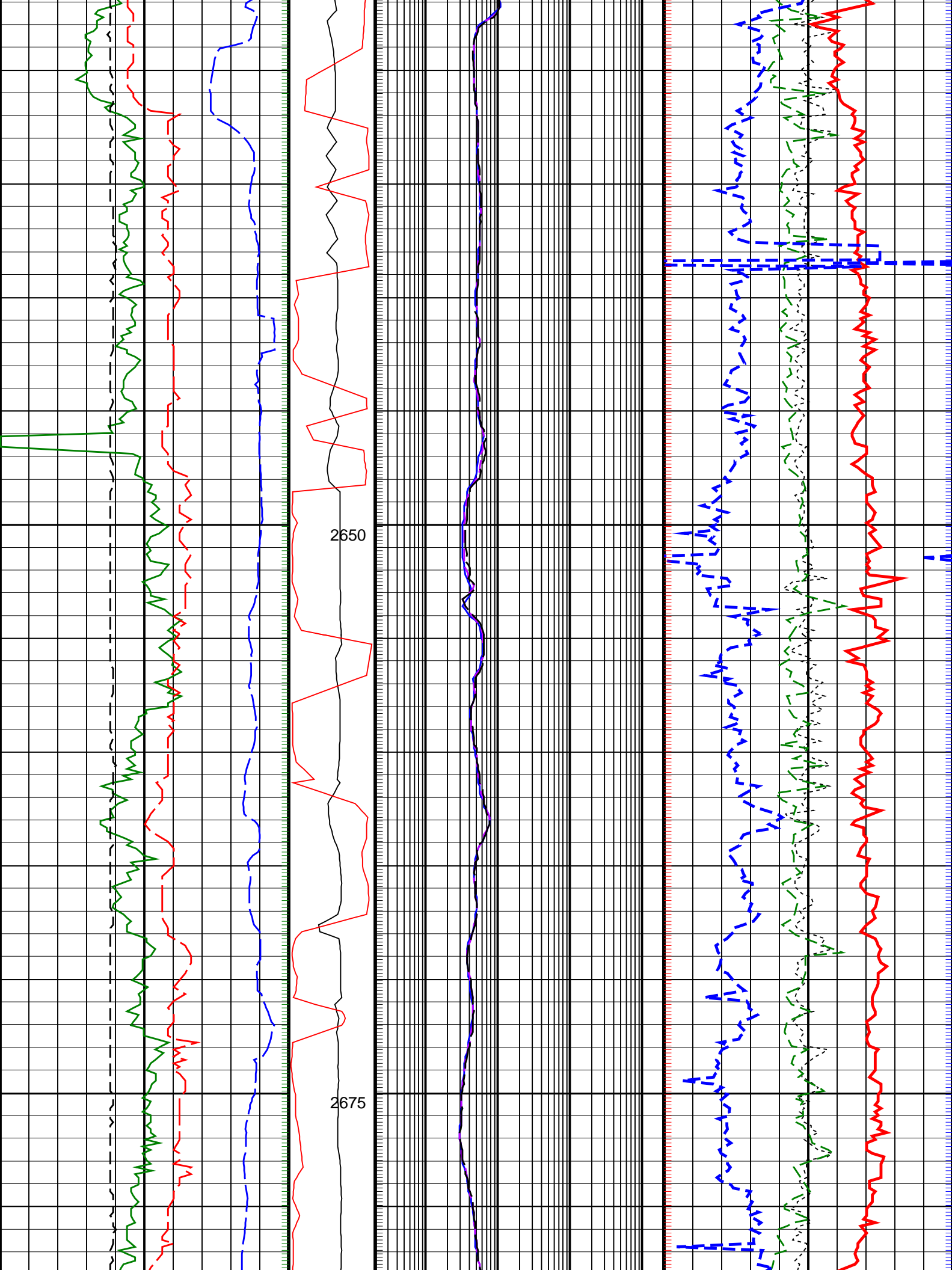
IDEAL Version: ID13\_0C\_08 <MD> Vertical Scale: 1:200 Graphics File Created: 26-Jul-2008 06:02

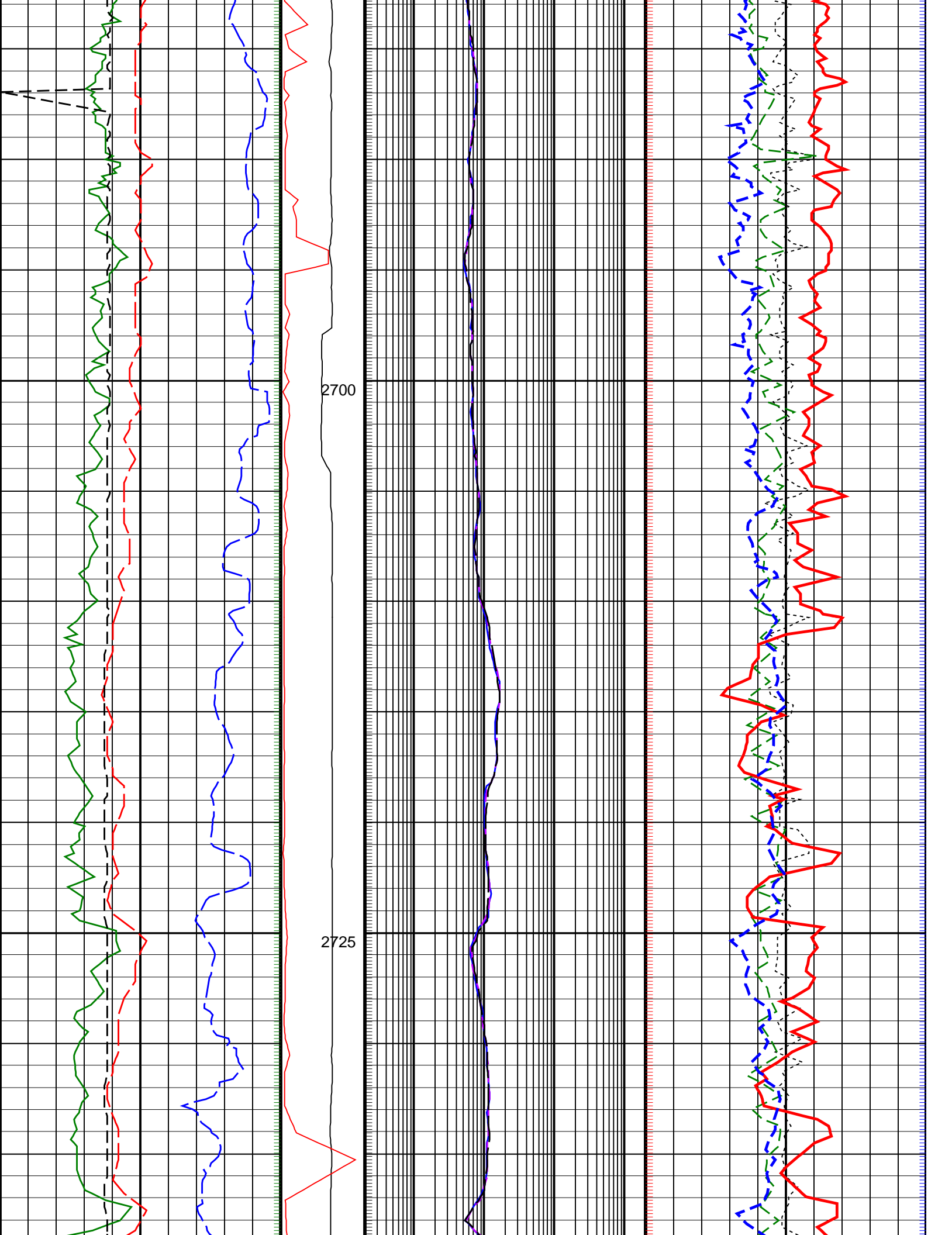
## PIP SUMMARY

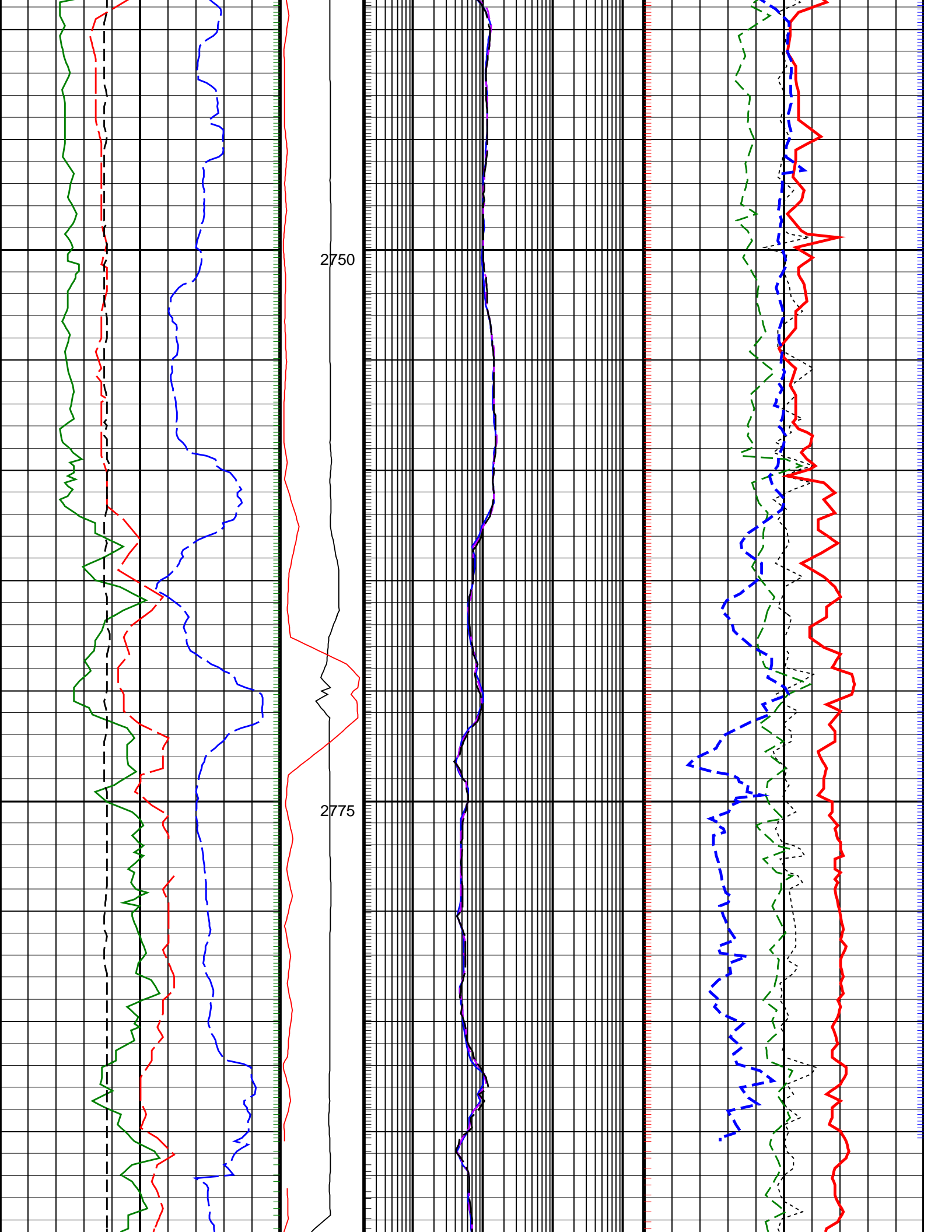
Density Samples +  
+ Gamma Ray Samples  
+ Resistivity Samples  
Neutron Samples +

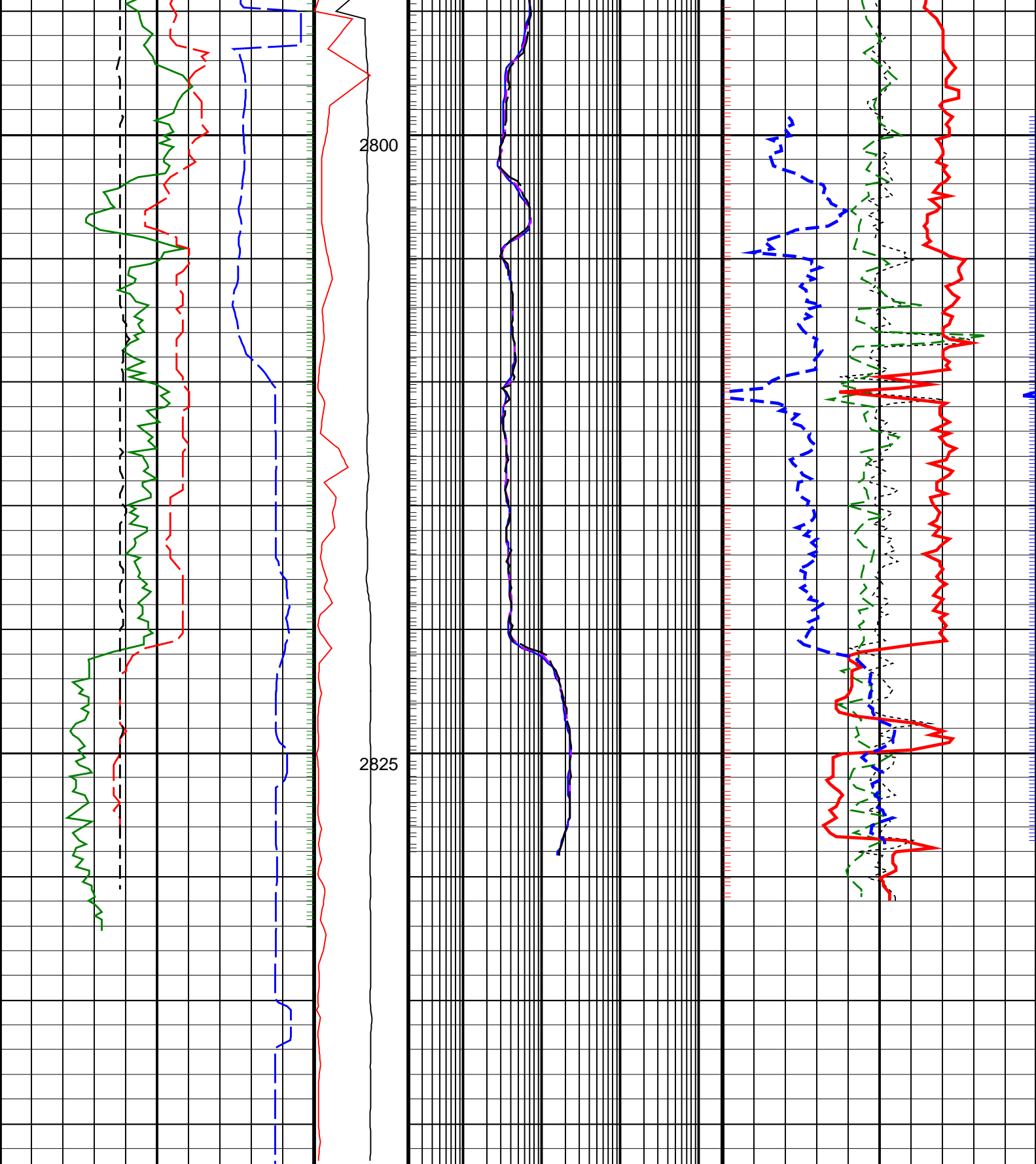
Ultrasonic Caliper, Average Diameter, Real-Time, Computed Downhole (UCAV_DH_ECO_RT) 6 (IN) 16		Thermal Neutron Porosity, Average, Real-Time (TNPH_ECO_RT) 45 (PU) -15
Raw Formation Sigma, Average, Real-Time, Computed Downhole (RFSA_DH_ECO_RT) 0 (CU) 50	ARC Phase Shift Resistivity 40 inch at 2 MHz, Real-Time (P40H_ECO_RT) 0.2 (OHMM) 2000	Bulk Density, Bottom, Real-Time, Computed Downhole (ROBB_DH_ECO_RT) 1.85 (G/C3) 2.85
Gamma Ray, Average, Real-Time (GRMA_ECO_RT) 0 (GAPI) 200	MWD Collar RPM (CRPM_RT) (RPM) 0 300	Photoelectric Factor, Bottom, Real-Time, Computed Downhole (PEB_DH_ECO_RT) 0 (----) 10
ROP*5 (ROP5) 200 (M/HR) 0	PKPK_RPM (Stick_RT) (RPM) 0 300	ARC Phase Shift Resistivity 16 inch at 2 MHz, Real-Time (P16H_ECO_RT) 0.2 (OHMM) 2000
		Bulk Density Correction, Bottom, Real-Time Computed Downhole (DRHB_DH_ECO_RT) -0.25 (G/C3) 0.25











<div>ROP*5 (ROP5)</div> <div>(M/HR)</div> <div>0200</div>	<div>PKPK_RPM</div> <div>(Stick_RT)</div> <div>(RPM)</div> <div>0300</div>	<div>ARC Phase Shift Resistivity 16 inch at 2</div> <div>MHz, Real-Time (P16H_ECO_RT)</div> <div>(OHMM)</div> <div>0.22000</div>	<div>Bulk Density Correction, Bottom,</div> <div>Real-Time Computed Downhole (DRHB_</div> <div>DH_ECO_RT)</div> <div>(G/C3)</div> <div>-0.250.25</div>
<div>Gamma Ray, Average, Real-Time</div> <div>(GRMA_ECO_RT)</div> <div>(GAPI)</div> <div>0200</div>	<div>MWD Collar</div> <div>RPM</div> <div>(CRPM_RT)</div> <div>(RPM)</div> <div>0300</div>	<div>ARC Phase Shift Resistivity 28 inch at 2</div> <div>MHz, Real-Time (P28H_ECO_RT)</div> <div>(OHMM)</div> <div>0.22000</div>	<div>Photoelectric Factor, Bottom,</div> <div>Real-Time, Computed Downhole (PEB_</div> <div>DH_ECO_RT)</div> <div>(----</div> <div>010</div>
<div>Raw Formation Sigma Average</div>			<div>Bulk Density Bottom Real Time</div>

Raw Formation Sigma, Average, Real-Time, Computed Downhole (RFSA_	ARC Phase Shift Resistivity 40 inch at 2	Bulk Density, Bottom, Real-Time,
DH_ECO_RT)	MHz, Real-Time (P40H_ECO_RT)	Computed Downhole (ROBB_DH_ECO_
0	0.2	1.85
(CU)	(OHMM)	(G/C3)
50	2000	2.85
Ultrasonic Caliper, Average Diameter, Real-Time, Computed Downhole		Thermal Neutron Porosity, Average,
(UCAV_DH_ECO_RT)		Real-Time (TNPH_ECO_RT)
6		45
(IN)		(PU)
16		-15
PIP SUMMARY		
Density Samples		
Gamma Ray Samples		
Resistivity Samples		
Neutron Samples		